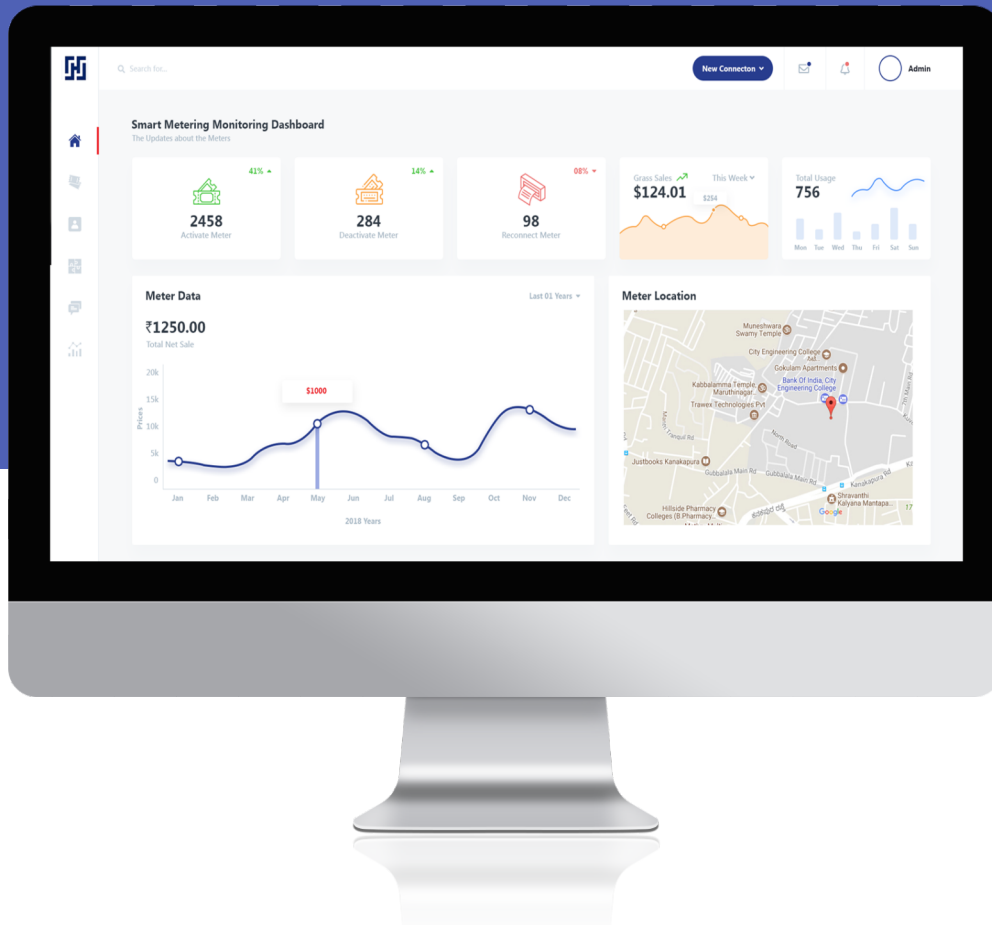




HES for Smart Metering

An IoT Based Energy Management Solution

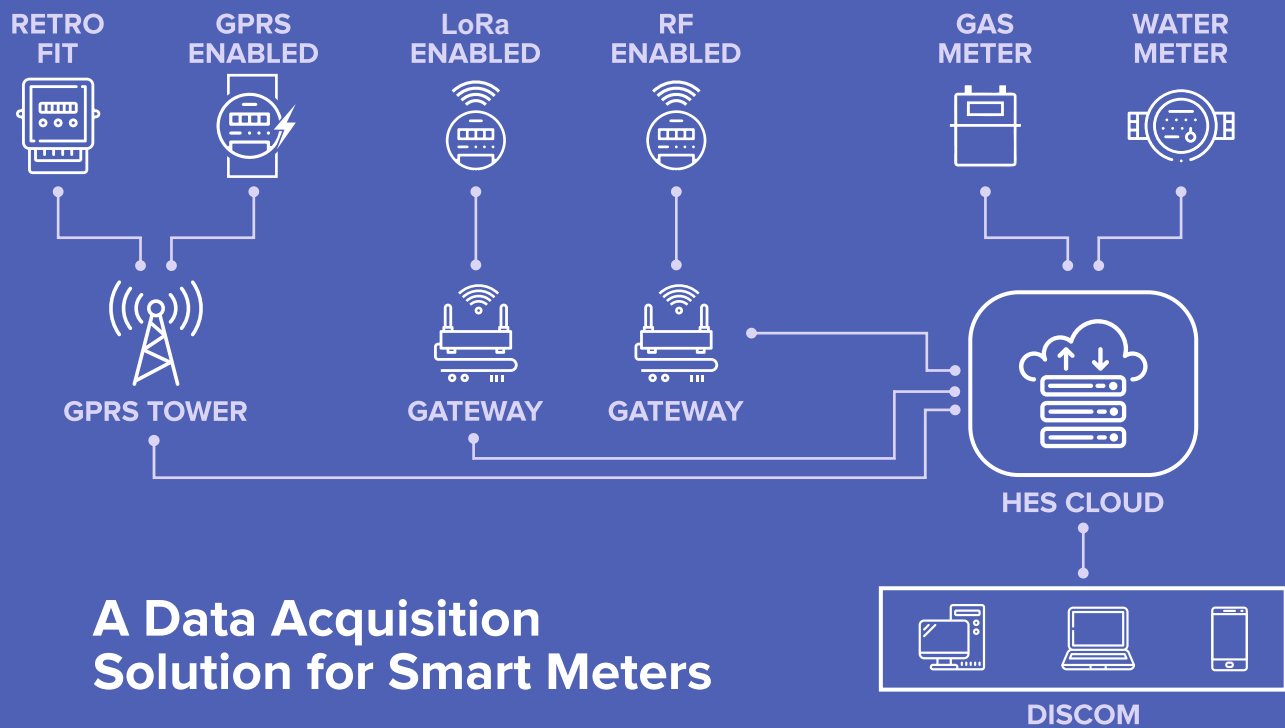


A Step Towards the Smart Grid Initiative

HES for Smart Metering is our scalable Head End Data acquisition solution for Advanced Metering Infrastructure (AMI). The IoT based solution monitors & controls smart meters operating as a communication driver between MDM Systems and measurement devices. The HES collects system-wide telemetry data & enables integration with smart energy devices with seamless interoperability, enhancing business intelligence, operational efficiency and system-wide remote device management.

Functions

- Provides platform-wide connectivity between field devices & enterprise-level software
- Manages & stores the acquired meter data enabling remote device management
- Integrates seamlessly using REST APIs.



A Data Acquisition Solution for Smart Meters

FEATURES

- Provides seamless integration with billing, data management and enterprise-level AMI applications using REST APIs.
- Compatible with IS16444 based Smart Meters.
- Establishes connectivity using RF Technology, 2G/3G, LoRaWAN.
- Highly scalable and secure data acquisition layer.
- Enables remote configuratoin/firmware upgrade/identity/access management of field devices.
- Uses DLMS/COSEM protocol for meter data acquisition.

ADVANTAGES

- Displays collected data using GUI (Graphical User Interface).
Provides site-specific information enabling intelligent business decisions.
- Manages network Gateways to prevent network overload.
- Monitors, analyses and manages numerous field meters and gateways.
- Uses standard connectors for third party AMI applications like MDM, Billing, etc.

DLMS over LoRaWAN

- HES provides support for communicating with LoRa based DLMS Smart Meters.
- HES communicates with LoRa based Meters through LoRa Gateways and LoRa servers, where fragmentation and de-fragmentation of data is performed in order to support large frame sized data to and from DLMS based Smart Meters.



Systems Level Solutions (I) Pvt. Ltd.

32, D4, Phase 1, GIDC Estate, V.U. Nagar, Gujarat 388 121, India.
Tel.: +91-2692-232 501/502 (Ext. 53) | Web: www.slscorp.com